

# 5301 W Hadley St



**INDUSTRIAL LAND  
FOR LEASE**

## 1.34 Acres

### FEATURES:

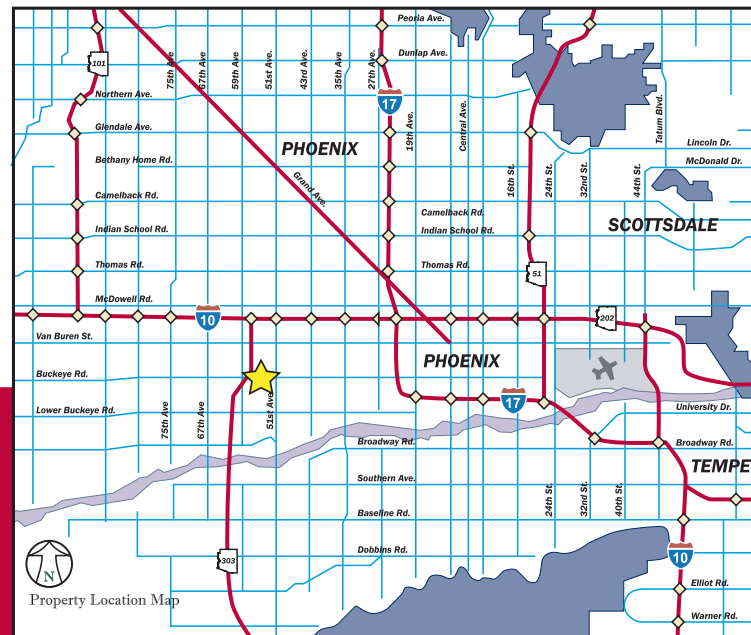
- ◆ **Acres:**
  - 1.34 Acres
- ◆ **Zoning:**
  - A-1 (City of Phoenix)
- ◆ **Location:**
  - Phoenix
  - I-10 (2.0 Miles)
- ◆ **Extras:**
  - Owner Will Fence Yard

For additional information, please contact:

**Benjamin L. Johnson**  
Vice President  
(602) 575-2318 Direct  
(602) 575-2338 Fax

**Carl K. Johnson, SIOR**  
Vice President  
(602) 575-2317 Direct  
(602) 575-2337 Fax

Ben.johnson@daumcommercial.com  
Carl.johnson@daumcommercial.com



**COMMERCIAL REAL ESTATE SERVICES**

The info contained in this brochure has been obtained from sources deemed reliable, but has not been independently verified by DAUM. While we do not doubt its accuracy, we make no guarantee or warranty as to its completeness or accuracy. © DAUM \* ADOT 2005 - <http://tpd.azdot.gov>

ONCOR INTERNATIONAL